



CASTLE HOWARD

Teacher-led Tour

Key Stage 1

VANBRUGH300

Presented by THE GEORGIAN GROUP



Welcome to Castle Howard! We are delighted that you and your class have come to visit us. This teacher-led tour has been developed to provide an engaging introduction to Castle Howard as part of the Vanbrugh 300 celebrations.

There are 8 stops on the tour that allow children to explore the exterior, interior and grounds of Castle Howard. This guide will support you to explore with ease. Each stop contains FACTS, QUESTIONS and ACTIVITIES to keep the children curious and engaged.

The tour should take about 45 - 55 minutes. The route around the house is easy to follow and maps are also included in this guide to help you. Our friendly room guides are available throughout the house to help or answer any questions that you or the children may have. The suggested activities can be completed either during the tour (if you have time) or back at school as you wish. The children will be given a worksheet to complete as they do the tour along with a clipboard and pencil. Please make sure you return these at the end of your visit.

Happy exploring!

TOUR STARTS AT THE MAIN ENTRANCE TO CASTLE HOWARD

WELCOME AND INTRODUCTION

- Welcome everyone to Castle Howard!
- Today we are going to be explorers. We will look carefully at the outside and the inside of this huge house to find clues about the people who lived here long ago.
- We are also going to travel back in time in our imaginations to think about what life was like over 300 years ago.

QUESTION: Does anyone remember the name of the man who designed and built this house? (Answer: Sir John Vanbrugh)

Let's see how many facts we can remember about him.

Walk along the side of the house following the route on the map. Find a suitable place to stop where you get a good view of the house and deliver the next section of the tour.

STOP 1

EXTERIOR OF THE CASTLE HOWARD (10 mins)

FACT:

- This was the first house Sir John Vanbrugh ever designed. He had never built a house before!
- He was friends with Charles Howard, the 3rd Earl of Carlisle, who asked him to design and build a grand home.
- Sir John had help from his friend Nicholas Hawksmoor, another clever architect.



QUESTION: Does this building look like a castle to you? What is different?

FACT:

- Castle Howard was built on the land where an old medieval castle once stood. That is why it is still called a “castle”, even though it is really a stately home.
- A stately home is a very big, very old house where an important family lived.

QUESTION: Can you guess how long Castle Howard took to build? [Answer: 100 years]

FACT:

- The Howard family have lived here for 300 years over eight generations – that means parents, children, grandchildren, great-grandchildren, great great grandchildren and more.
- Now, Nicholas Howard, his wife Victoria and their dog Poppy live here.



**QUESTION: What do you think it would be like to live in a house this big?
How might it be different from living in your house today?**

ACTIVITY: As you explore the outside of the house, complete the Shape Hunt Activity on your worksheets. Can you find the 2D shapes anywhere on the outside of the house? Write down or draw on your worksheets where you see them.

BEFORE WE GO INSIDE CASTLE HOWARD...

...we need to remember 4 important things:

- There are other visitors, so we use quiet voices.
- Look for the red ropes – they show us where we can and cannot go.
- The furniture and objects are very old and special, so we must not touch or sit on them.
- There are friendly guides in the rooms. If you have a question, you can ask them.

Return to the main house entrance where you started and enter through the door.

STOP 2 GRAND STAIRCASE (5 mins)

FACT:

- This staircase is the main entrance to the house.
- Look up! The ceiling has a skylight made of glass.

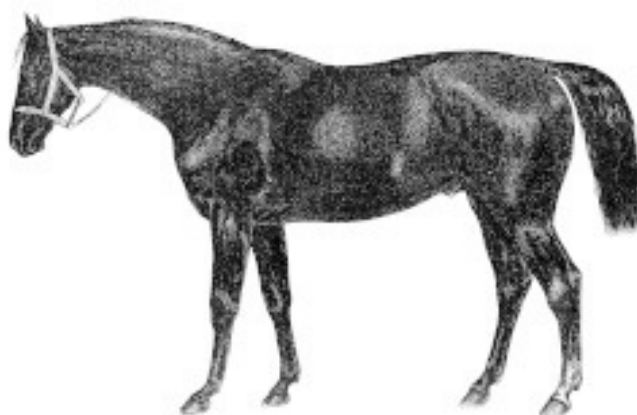
QUESTION: What shape are the glass panels? (Answer: Octagons – they have 8 sides)

QUESTION: How many glass panels do you think there are? (Answer: 74)

FACT:

- On the walls you can see a type of art called **bas-reliefs**.
- These are flat sculptures made from plaster. Many are copies of very old art from Ancient Greece and Rome.

CAN YOU SPOT... a horse on one of the bas-reliefs?



At the top of the stairs pause on the China Landing.

STOP 3

ANTIQUÉ PASSAGE (5 mins)

FACT:

- This long hallway we are about to walk along is full of old statues and treasures collected from Italy about 300 years ago.
- It is a bit like walking through a museum inside a house.



CAN YOU SPOT?...

- **A man with a hat that looks like a pot.**
- **A statue of a child. How many statues of children can you find?**



QUESTION: As we walk along, how many different types of animal can you find in the statues? Write them down on your worksheet.

The lion is the Howard family emblem. Can you find any lions?



In order to have a slightly shorter tour for this age group we are not taking them on the standard tour route through the bedrooms.

Instead at this point, ask a room guide to move the red rope and walk straight ahead heading slowly along the Antique Passage in single file.

The passage turns left about halfway along.

At the end of the Antique Passage you will then turn right into the Great Hall.

STOP 4

THE GREAT HALL

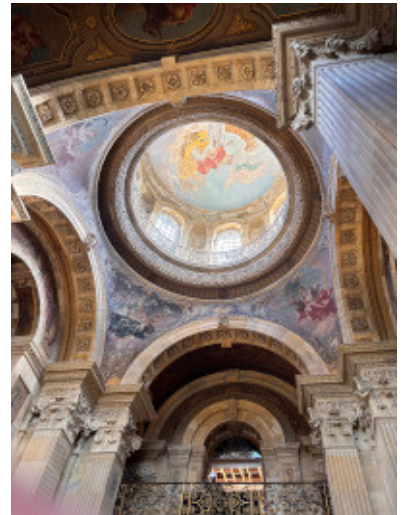
(5 mins or 15 mins with activity)

FACT:

- This is the most WOW room in the whole house.
- Look up! It is so tall that four double-decker buses could fit on top of each other inside it.
- Nicholas Hawksmoor helped design this part of the house. He also helped design the dome of St Paul's Cathedral in London.
- Long ago, the dome had a huge painting of gods and goddesses.
- In 1940, a huge fire destroyed the painting and the dome, but the dome was rebuilt.

**QUESTION: How does this room make you feel?
What is your favourite thing in here?**

OPTIONAL ACTIVITY: (Can also be done back at school)
Imagine you are an artist.
What picture would you paint inside the dome?
Draw your idea on your worksheet.



Walk directly across the Great Hall and into the Garden Hall. The standard tour route takes you upstairs at this point but speak to one of the room guides who can help you find your way to the Garden Hall. Once in here turn right into the Tapestry Drawing Room.

INTERESTING FACT FOR TEACHERS!

*The Garden Hall featured heavily in the TV series *Brideshead Revisited* (1981). In fact it was actually restored following the fire specifically for the filming*

STOP 5 THE TAPESTRY DRAWING ROOM (2 mins)



FACT:

- This room was destroyed in the fire and was an empty shell for 85 years.
- It was only restored last year, so it is the oldest newest room in the house.
- The huge wall hangings are called tapestries.
- They show the four seasons – Spring, Summer, Autumn and Winter and are over 300 years old.

Continue along here, through the Music Room and into the Crimson Dining Room

STOP 6 THE CRIMSON DINING ROOM (3 mins)

FACT:

- This room is now a grand dining room, but long ago it was a State Bed Chamber for a king or queen.
- Remember the Howard family symbol is a lion.

QUESTION: Look all around. How many lions can you find in this room? Where are they hiding?



Continue along here, through the Turquoise Drawing Room and the Museum Room and then turn right into the Long Gallery. Walk through until you get to an Octagon-shaped room – The Octagon.



STOP 7

Long Gallery and Octagon (5 mins or 10 mins with activity)

FACTS:

- This room is called the Long Gallery.
- It is 50 metres long – longer than five double-decker buses in a row.
- In the 1700s, people walked here to exercise indoors when it was raining.
- The Howard family used this room for concerts, parties and dances.
- Nicholas Howard, who lives here today, used to roller skate in here when he was little.
- The portraits show many generations of the Howard family – like a giant family photo album.
- This room has been on TV in *Bridgerton*.

QUESTION: The part of the room that we are in is called the Octagon. Count how many sides it has.

OPTIONAL ACTIVITY: (Can also be done back at school)

In the frame on your worksheet, draw a portrait of yourself in the style of the old portraits – maybe with a wig or fancy clothes of the time.

Finally, walk to the end of the Long Gallery then follow the signs to the gift shop and exit. As you leave the house turn left and then left again and head towards the Atlas Fountain.

If you are visiting the fountain after midday it should be in full flow!

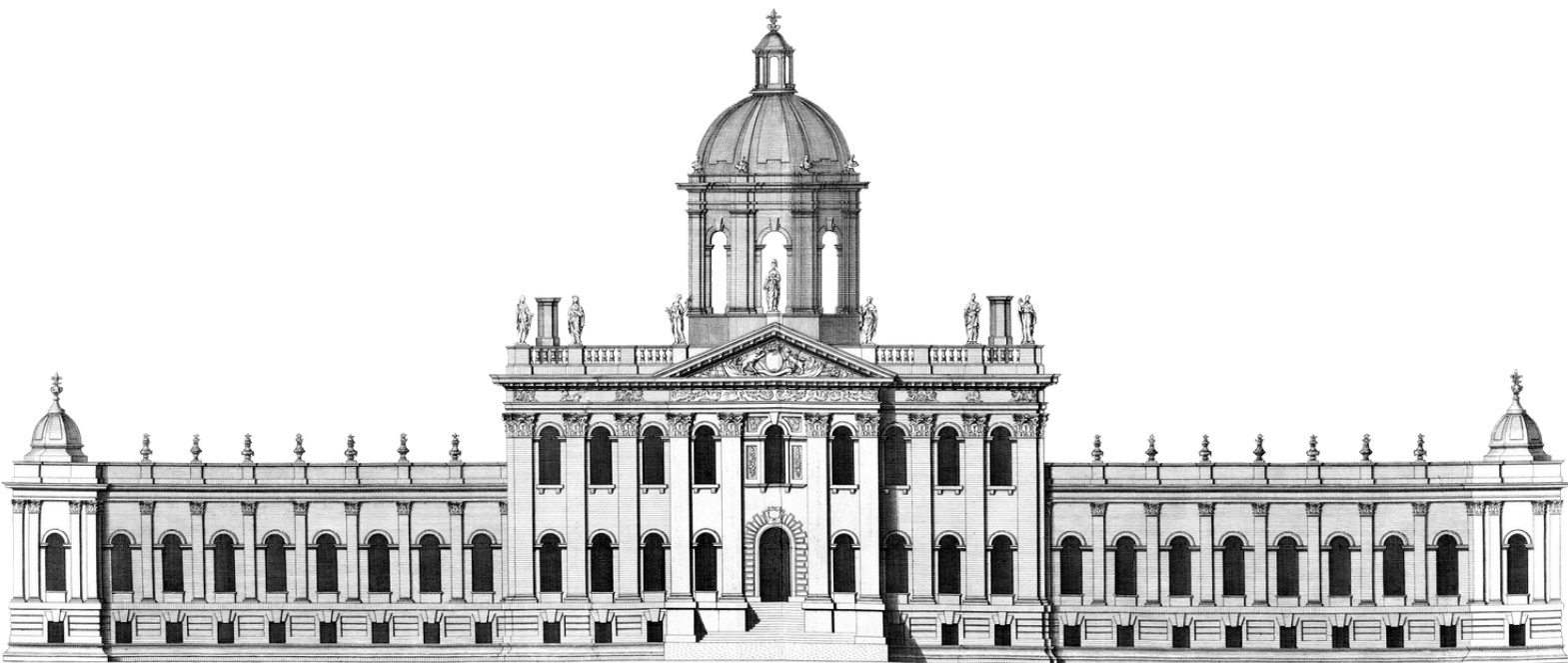
STOP 8

ATLAS FOUNTAIN (10 mins incl. walking)

FACTS:

- In the middle is Atlas, a character from Greek myths.
- He is holding up a giant globe because he was punished by Zeus and made to hold up the sky forever.
- A book of maps is called an Atlas, named after this mythical figure.
- Around him are Tritons – half-man, half-sea creatures blowing water from shells.
- The fountain has no pumps or electricity. The water comes from a reservoir higher up the hill, so it rushes down the pipes and makes the fountain spray.
- The fountain is 170 years old and still working today.

END OF TOUR



EXTERIOR OF HOUSE MAP (STOPS 1 and 8)



INTERIOR MAP (STOPS 2 - 7)

